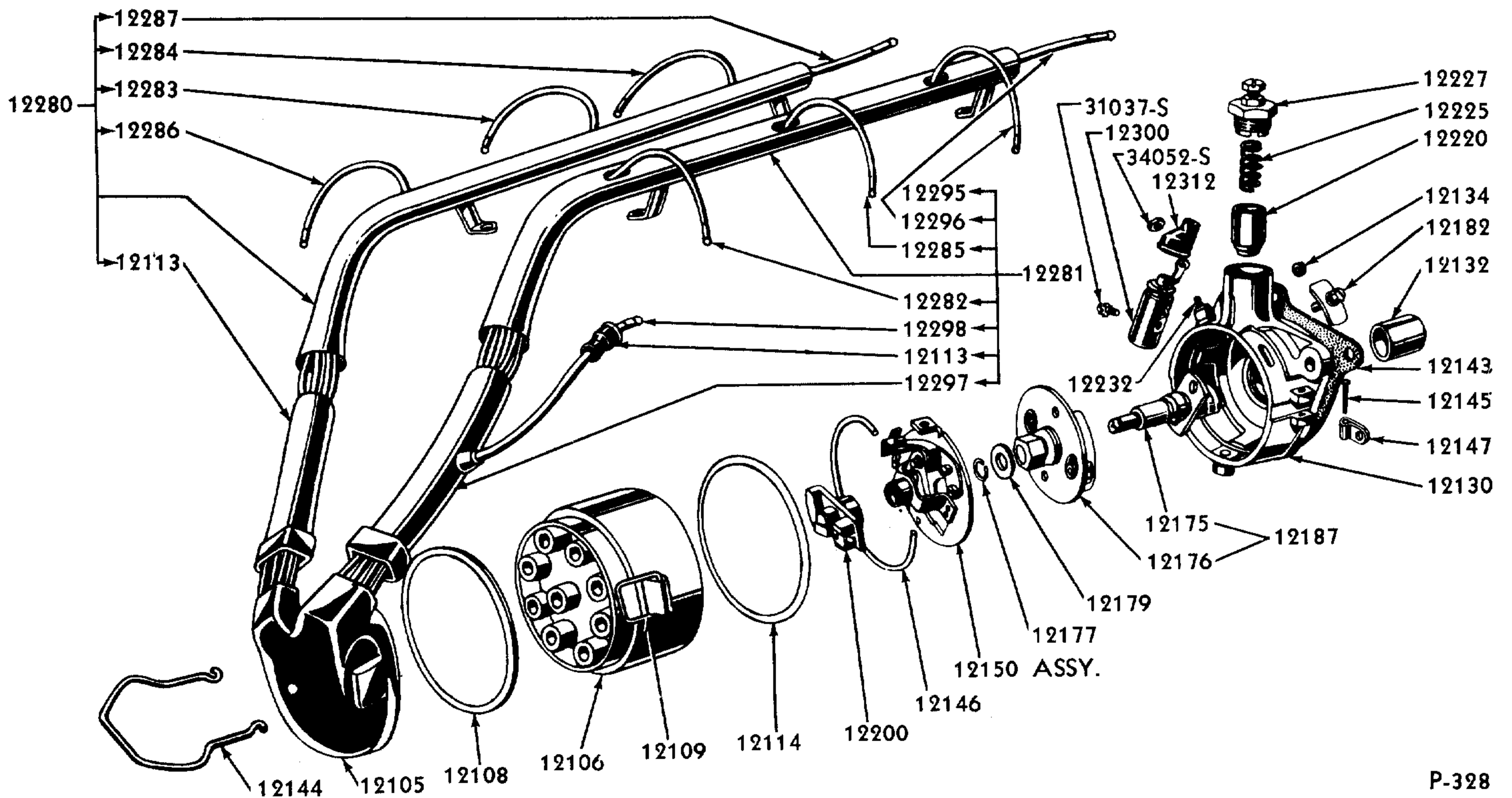


P-428

1942-44 8 CYL. DISTRIBUTOR (21A-12127)



P-328

1945-48 8 CYL. DISTRIBUTOR (59A-12127) & RELATED PARTS

Basic numbers only shown on illustration. Order by Part Numbers shown in list of parts.





## CHASSIS PARTS CATALOGUE

PART NUMBER	PART NAME	NO. REQ'D	MODEL	YEAR
<b>Distributor</b>				
B 12000	Coil assy (ignition)	1	Pass,Comm,Trucks (4 cyl)	28-34
	26483-S7 Bolt (ignition coil to dash)- 1/4"-20 x 1/2"	2	Pass,Comm,Trucks (4 cyl)	28-31
	34805-S8 Lockwasher-1/4"			
	26554-S2 Screw (ignition coil to dash)- No.12-24 x 1 1/8"	2	Pass,Comm,Trucks (4 cyl)	32-34
	34804-S8 Lockwasher-No.12			
	34079-S7 Nut (ignition coil terminal)- No.10-32	2	Pass,Comm,Trucks (4 cyl)	28-34
	34803-S7 Lockwasher-No.10			
68 12006	Spring (ignition coil contact)	1	Pass,Comm,Trucks (8 cyl)	36-41
91A 12006	Spring (ignition coil contact)	1	Comm,Trucks 40 HP (4 cyl)	41-42
18 12010	Brush & spring assy (ignition coil)-use with 18-12024-A	1	Pass,Comm,Trucks (8 cyl)	32-36
68 12010	Brush & spring assy (ignition coil)-use with 68-12024,78-12024-A or 81A-12024	1	Pass,Comm,Trucks (8 cyl)	36-41
18 12024-A	Coil & condenser assy (ignition)-dome top-3 screw mounting-use with 18-12127,40-12127-A or 40-12127-B	1	Pass,Comm,Trucks (8 cyl)	32-36
68 12024	Coil & condenser assy (ignition)-flat top-3 screw mounting-use with 68-12127	1	Pass,Comm,Trucks (8 cyl)	36
78 12024-A	Coil & condenser assy (ignition)-dome top-2 screw mounting-use with 78-12127 or 11A-12127- replaced by 78-12036	1	Pass,Comm,Trucks (8 cyl)	37-41
81A 12024	Coil & condenser assy (ignition)-dome top with 4 rivets-2 screw mounting-use with 78-12127 or 11A-12127-replaced by 81A-12036	1	Pass,Comm,Trucks (8 cyl)	37-41
9N 12024	Coil assy (ignition)-use with 9N-12100	1	Comm,Trucks 40 HP (4 cyl)	41-42
1GA 12024	Coil assy (ignition)-use with 1GA or 5GA-12127	1	Pass,Comm,Trucks (6 cyl "G" Series)	41-47
1GA 12024	Coil assy (ignition)-use with 21A or 59A-12127	1	Pass,Comm,Trucks (8 cyl)	42-48
	21A-12257 Bracket (ignition coil mounting-use with 21A or 59A-12127	1	Pass (8 cyl)	42-48
		1	Comm,Trucks (8 cyl)	42-47
8BA 12029	Coil assy (ignition)-less mounting strap-use with 7HA-12127	1	Pass (6 cyl "H" Series)	47-48
		1	Comm,Trucks (6 cyl "H" Series)	47
	350830-S7 Nut (ignition coil terminal)- No.8-32-use with 9N-12024	1	Comm,Trucks 40 HP (4 cyl)	41-42
	350830-S7 Nut (ignition coil terminal)- No.8-32 use with 1GA-12024	2	Pass (6 cyl)	41-48
		2	Comm,Trucks (6 cyl)	41-47
	350830-S7 Nut (ignition coil terminal)- No.8-32-use with 18-12024-A, 68-12024,78-12024-A or 81A-12024	1	Pass,Comm,Trucks (8 cyl)	32-41
	350830-S7 Nut (ignition coil terminal) No.8-32-use with 1GA-12024	2	Pass (8 cyl)	42-48
		2	Comm,Trucks (8 cyl)	42-47
	34079-S7 Nut (ignition coil terminal)- No.10-32	2	Pass (6 cyl "H" Series)	47-48
		2	Comm,Trucks (6 cyl "H" Series)	47
	34803-S7 Lockwasher-No.10			



CHASSIS PARTS CATALOGUE

PART NUMBER	PART NAME	NO. REQ'D	MODEL	YEAR 19__
	34802-S7 Lockwasher-No.8			
	+26587-S7 Bolt (ignition coil attaching)- 1/4"-20 x 1 5/8"-use with 1GA-12024	2	Pass,Comm,Trucks (6 cyl"G" Series)	41-47
	+26587-S7 Bolt (ignition coil attaching)- 1/4"-20 x 1 5/8"-use with 1GA-12024	2	Pass (8 cyl)	42-48
		2	Comm,Trucks (8 cyl)	42-47
	44719-S8 Washer-flat-1/4"			
	34805 -S8 Lockwasher-1/4"			
	27153-S7 Screw (ignition coil attaching)-No.10-32 x 1 1/8"	3	Pass,Comm,Trucks (8 cyl)	32-36
	27177-S7 Screw (ignition coil attaching)-No.10-32 x 1 1/2"	2	Pass,Comm,Trucks (8 cyl)	37-41
	34803-S7 Lockwasher-No.10			
78 12036	Coil assy (ignition)-less condenser-dome top- 2 screw mounting	1	Pass,Comm,Trucks (8 cyl)	37-41
81A 12036	Coil assy (ignition)-less condenser-dome top with 4 rivets-2 screw mounting	1	Pass,Comm,Trucks (8 cyl)	37-41
	350830-S Nut (ignition coil terminal)- No.8-32-use with 78-12036 or 81A-12036	1	Pass,Comm,Trucks (8 cyl)	32-41
	27177-S7 Screw (ignition coil attaching)- No.10-32 x 1 1/2"	2	Pass,Comm,Trucks (8 cyl)	37-41
	34803-S2 Lockwasher-No.10			
7HA 12043-C	Strap assy (ignition coil mounting)-use with 7RA-12029	1 1	Pass (6 cyl"H" Series) Comm,Trucks (6 cyl "H" Series)	47-48 47
	27113-S7 Screw (ignition coil mounting strap clamping)-No.10-32 x 3/4"	1 1	Pass (6 cyl "H" Series) Comm,Trucks (6 cyl"H" Series)	47-48 47
	34141-S7 Nut (ignition coil mounting , strap clamping screw)-No.10- 32	1 1	Pass (6 cyl"H" Series) Comm,Trucks (6 cyl "H" Series)	47-48 47
	34803-S7 Lockwasher (ignition coil mounting strap clamping screw)-No.10	1 1	Pass (6 cyl"H" Series) Comm,Trucks (6 cyl "H" Series)	47-48 47
	20326-S7 Bolt (ignition coil mounting strap to cyl. block)-5/16"- 18 x 5/8"	2 2	Pass (6 cyl"H" Series) Comm,Trucks (6 cyl "H" Series)	47-48 47
	34846-S2 Lockwasher (ignition coil mounting strap to cyl. block bolt)-5/16"	2 2	Pass (6 cyl"H" Series) Comm,Trucks (6 cyl "H" Series)	47-48 47
9N 12100	Distributor assy-less coil	1	Comm,Trucks 40 HP (4 cyl)	41-42
	48-12148 Bolt (distributor to front cylinder cover)	2	Comm,Trucks 40 HP (4 cyl)	41-42
18 12104	Gasket set (distributor)-use with 18-12127, 40-12127-A,40-12127-B,78-12127 or 11A-12127- consists of the following 2- 18 12108 Gasket 1- 78 12140-A Gasket 2- 18 12115 Ring 1- 68 12143 Gasket 1- 18 12140-A Gasket	1	Pass,Comm,Trucks (8 cyl)	32-41
21A 12104	Gasket set (distributor)-use with 21A-12127 or 59A-12127-consists of the following 1-59A 12108 Gasket 1-1GA 12134 Seal 1-21A 12114 Gasket 1-1GA 12143 Gasket 1-1GA 12114-B Gasket 1-1GA 12312 Cap	1 1	Pass (8 cyl) Comm,Trucks (8 cyl)	42-48 42-47

† No Longer Supplied



## CHASSIS PARTS CATALOGUE

PART NUMBER	PART NAME	NO. REQ'D	MODEL	YEAR 19__
21A 12104	Gasket set (distributor)-use with 1GA-12127 or 5GA-12127-consists of the following 1-59A 12108 Gasket 1-1GA 12134 Seal 1-21A 12114 Gasket 1-1GA 12143 Gasket 1-1GA 12114-B Gasket 1-1GA 12312 Cap	1	Pass,Comm,Trucks (6 cyl"G" Series)	41-47
B 12105	Body assy (distributor terminal)-use with A-12127 or B-12127	1	Pass,Comm,Trucks (4 cyl)	28-34
†18 12105-A	Cap (distributor terminal plate)-without center pillar-use with 18-12127 or 40-12127-A	2	Pass,Comm,Trucks (8 cyl)	32-33
18 12105-B	Cap (distributor terminal plate)-with center pillar-use with 18-12127,40-12127-A,40-12127-B, 68-12127,78-12127 or 11A-12127	2	Pass,Comm,Trucks (8 cyl)	32-41
59A 12105	Cap (distributor terminal housing)-use with 59A-12127	1	Pass (8 cyl)	45-48
		1	Comm,Trucks (8 cyl)	45-47
9N 12106-B	Housing assy (distributor terminal)-use with 9N-12100	1	Comm,Trucks 40 HP (4 cyl)	41-42
1GA 12106	Housing assy (distributor terminal)-use with 1GA-12127	1	Pass,Comm,Trucks (6 cyl)	41-42
21A 12106-A	Housing assy (distributor terminal)-use with 21A-12127	1	Pass,Comm,Trucks (8 cyl)	42-44
59A 12106	Housing assy (distributor terminal)-use with 59A-12127	1	Pass (8 cyl)	45-48
		1	Comm,Trucks (8 cyl)	45-47
5GA 12106	Housing assy (distributor terminal)-use with 5GA-12127	1	Pass,Comm,Trucks (6 cyl"G" Series)	46-47
7HA 12106	Housing assy (distributor terminal)-use with 7HA-12127	1	Pass (6 cyl"H" Series)	47-48
		1	Comm,Trucks (6 cyl"H" Series)	47
18 12107	Point set (distributor breaker arm & contact)-use with 18-12127,40-12127-A or 40-12127-B-consists of the following 1- 18 12162-B Arm 2- 351301-S Washer 2- 18 12172-B Points 2- 352200-S Cotter pin	1	Pass,Comm,Trucks (8 cyl)	32-36
78 12107	Point set (distributor breaker arm & contact)-use with 68-12127,78-12127,11A-12127-21A-12127 or 59A-12127-consists of the following 2- 68 12162 Arm 2- 351260-S Washer 1- 68 12218 Point 2- 351201-S Cotter pin 1- 68 12219 Point 2- 355016-S7 Screw	1 1	Pass (8 cyl) Comm,Trucks (8 cyl)	36-48 36-47
1GA 12107	Point set (distributor breaker arm & contact)-use with 1GA-12127 or 5GA-12127-consists of the following 1- 68 12162 Arm 1- 351260-S Washer 1- 68 12219 Point 1- 352201-S Cotter pin 1- 355016-S7 Screw	1	Pass,Comm,Trucks (6 cyl"G" Series)	41-47
18 12108	Gasket (distributor terminal plate cap)	2	Pass,Comm,Trucks (8 cyl)	32-41
59A 12108	Gasket (distributor terminal housing cap)	1	Pass (8 cyl)	45-48
		1	Comm,Trucks (8 cyl)	45-47
59A 12109	Bail (distributor terminal housing cap)	2	Pass (8 cyl)	45-48
		2	Comm,Trucks (8 cyl)	45-47
8HA 12110	Conduit (ignition cable)-used when oil bath cleaner is used	1	Pass,Comm,Trucks (6 cyl "H" Series)	47-48
9N 12112	Conduit (distributor spark plug wires)-use with 9N-12100	1	Comm,Trucks 40 HP (4 cyl)	41-42

† No Longer Supplied



CHASSIS PARTS CATALOGUE

PART NUMBER	PART NAME	NO. REQ'D	MODEL	YEAR 19__
18 12113	Seal (distributor to spark plug wire conduit weather)-rubber	2	Pass,Comm,Trucks (8 cyl)	32-41
9N 12113-A	Seal (distributor to spark plug wire conduit weather)-replaced by 2N-12113	4	Comm,Trucks 40 HP (4 cyl)	41-42
9N 12113-A	Seal (distributor to spark plug wire conduit weather)-replaced by 2N-12113	6	Pass,Comm,Trucks (6 cyl"G" Series)	41-47
9N 12113-A	Seal (distributor to spark plug wire conduit weather)-replaced by 2N-12113	8	Pass (8 cyl)	42-48
9N 12113-A	Seal (distributor to spark plug wire conduit weather)-replaced by 2N-12113	8	Comm,Trucks (8 cyl)	42-47
9N 12113-A	Seal (distributor to coil high tension wire weather)-replaced by 2N-12113	2	Pass,Comm,Trucks (6 cyl"G" Series)	41-47
9N 12113-A	Seal (distributor to coil high tension wire weather)-replaced by 2N-12113	2	Pass (8 cyl)	42-48
9N 12113-A	Seal (distributor to coil high tension wire weather)-replaced by 2N-12113	2	Comm,Trucks (8 cyl)	42-47
2N 12113	Seal (distributor to spark plug wire conduit weather)	4	Comm,Trucks 40 HP (4 cyl)	41-42
2N 12113	Seal (distributor to spark plug wire conduit weather)	6	Pass (6 cyl"H" Series)	47-48
2N 12113	Seal (distributor to spark plug wire conduit weather)	6	Comm,Trucks (6 cyl"H" Series)	47
2N 12113	Seal (distributor to coil high tension wire weather)	2	Pass (6 cyl"H" Series)	47-48
2N 12113	Seal (distributor to coil high tension wire weather)	2	Comm,Trucks (6 cyl"H" Series)	47
59A 12113	Seal (distributor to spark plug wire conduit weather)-R.H.	1	Pass (8 cyl)	46-48
59A 12113	Seal (distributor to spark plug wire conduit weather)-R.H.	1	Comm,Trucks (8 cyl)	45-47
5GA 12113	Seal (distributor to spark plug wire conduit weather)	1	Pass,Comm,Trucks (6 cyl"G" Series)	46-47
91A 12114	Gasket (distributor terminal housing)-use with 9N-12100	1	Comm,Trucks 40 HP (4 cyl)	41-42
1GA 12114-A	Gasket (distributor terminal housing)-use with 1GA-12127	1	Pass,Comm,Trucks (6 cyl)	41-42
1GA 12114-B	Gasket (distributor terminal housing)-3.16" O.D.-2.94" I.D.-use with 1GA-12127 or 5GA-12127	1	Pass,Comm,Trucks (6 cyl"G" Series)	41-47
1GA 12114-B	Gasket (distributor terminal housing)-3.16" O.D.-2.94" I.D.-use with 59A-12127	1	Pass (8 cyl)	46-48
1GA 12114-B	Gasket (distributor terminal housing)-3.16" O.D.-2.94" I.D.-use with 59A-12127	1	Comm,Trucks (8 cyl)	45-47
21A 12114	Gasket (distributor terminal housing-use with 21A-12127	1	Pass,Comm,Trucks (8 cyl)	42-44
B 12115	Cap assy (distributor terminal body)-use with A-12127 or B-12127	1	Pass,Comm,Trucks (4 cyl)	28-34
18 12115	Ring (distributor terminal plate cap retaining)-rubber	2	Pass,Comm,Trucks (8 cyl)	32-41
18 12116	Plate (distributor terminal)-use with 18-12127, 40-12127-A or 40-12127-B	2	Pass,Comm,Trucks (8 cyl)	32-36
68 12116	Plate (distributor terminal)-use with 68-12127, 78-12127 or 11A-12127	2	Pass,Comm,Trucks (8 cyl)	36-41
†18 12120	Bushing (distributor housing)-front		Refer to 12127 Distributor Chart	
40 12120	Bushing (distributor housing)-front		Refer to 12127 Distributor Chart	
1GA 12120	Bushing (distributor breaker plate)		Refer to 12127 Distributor Chart	
7RA 12120	Bushing (distributor housing)-upper		Refer to 12127 Distributor Chart	
40 12124	Housing (distributor advance)-use with 18-12127, 40-12127-A or 40-12127-B		Refer to 12127 Distributor Chart	
68 12124	Housing (distributor advance)-use with 68-12127, 78,12127 or 11A-12127		Refer to 12127 Distributor Chart	
18 12126	Pipe (distributor drain)		Refer to 12127 Distributor Chart	
21A 12126-A	Pin (distributor terminal housing location)		Refer to 12127 Distributor Chart	
21A 12126-A	Pin (distributor terminal housing location)		Refer to 12127 Distributor Chart	

† No Longer Supplied



## CHASSIS PARTS CATALOGUE

PART NUMBER	PART NAME	NO. REQ'D	MODEL	YEAR 19__
A 12127	Distributor assy-less terminal body, cap and rotor	1	Pass,Comm,Trucks (4 cyl)	28-31
B 12127	Distributor assy-less terminal body, cap and rotor	1	Pass,Comm,Trucks (4 cyl)	32-34
	+90570-S8 Set screw (distributor to cylinder block)-3/8"-24 x 11/16"	1	Pass,Comm,Trucks (4 cyl)	28-34
	33800-S8 Nut (distributor to cylinder block set screw)-3/8"-24	1	Pass,Comm,Trucks (4 cyl)	28-34
18 12127	Distributor assy-less coil, terminal plates & caps-replaced by the following 1- 78 12024-A Coil 2- 68 12116 Plate 1- 78 12140-A Gasket 1-11A 12127 Distributor 2- 18 12105-B Cap	1	Pass,Comm,Trucks 90 HP (8 cyl)	32
40 12127-A	Distributor assy-less coil, terminal plates & caps-shaft stamped "40A"-replaced by the following 1- 78 12024-A Coil 2- 68 12116 Plate 1- 78 12140-A Gasket 1-11A 12127 Distributor 2- 18 12105-B Cap	1	Pass,Comm,Trucks 90 HP (8 cyl)	33
40 12127-B	Distributor assy-less coil terminal plates, & caps-shaft stamped "40B"-replaced by the following 1- 78 12024-A Coil 2- 68 12116 Plate 1- 78 12140-A Gasket 1-11A 12127 Distributor 2- 18 12105-B Cap	1	Pass,Comm,Trucks 90 HP (8 cyl)	34-36
68 12127	Distributor assy-less coil, terminal plates & caps-shaft stamped "68"-replaced by 11A-12127, 78-12024-A & 78-12140-A	1	Pass,Comm,Trucks 90 HP (8 cyl)	36
78 12127	Distributor assy-less coil, terminal plates & caps-shaft stamped "78"-replaced by 11A-12127	1	Pass,Comm,Trucks (8 cyl)	37-40
11A 12127	Distributor assy-less coil, terminal plates & caps-shaft stamped "11A"	1	Pass,Comm,Trucks (8 cyl)	41
	48-12148 Bolt (distributor to cylinder front cover)	3	Pass,Comm,Trucks (8 cyl)	32-41
	34846-S2 Lockwasher (distributor to front cover bolt)-5/16"	3	Pass,Comm,Trucks (8 cyl)	32-41
	B-10141 Oil cup (distributor)	1	Pass,Comm,Trucks (8 cyl)	33-41
1GA 12127	Distributor assy-less terminal housing	1	Pass,Comm,Trucks (6 cyl)	41-42
	48-12148 Bolt (distributor to cylinder front cover)	2	Pass,Comm,Trucks (6 cyl)	41-42
	34846-S2 Lockwasher (distributor to cylinder front cover)-5/16"	2	Pass,Comm,Trucks (6 cyl)	41-42
21A 12127	Distributor assy-less terminal housing	1	Pass,Comm,Trucks (8 cyl)	42-44
59A 12127	Distributor assy-less terminal housing & rotor	1	Pass (8 cyl)	46-48
		1	Comm,Trucks (8 cyl)	45-47
	48-12148 Bolt (distributor to cylinder front cover)	2	Pass (8 cyl)	42-48
		2	Comm,Trucks (8 cyl)	42-47
	34846-S2 Lockwasher-5/16"			
5GA 12127	Distributor assy-less terminal housing & rotor	1	Pass,Comm,Trucks (6 cyl "G" Series)	46-47
	48-12148 Bolt (distributor to cylinder front cover)	2	Pass,Comm,Trucks (6 cyl "G" Series)	46-47
	34846-S2 Lockwasher-5/16"			
7HA 12127	Distributor assy-less terminal housing & rotor	1	Pass (6 cyl "H" Series)	47-48
		1	Comm,Trucks (6 cyl "H" Series)	47
	B-10141 Oil cup (distributor)	1	Pass (6 cyl "H" Series)	47-48
		1	Comm,Trucks (6 cyl "H" Series)	47
	20326-S7 Bolt (distributor to engine mounting)-5/16"-18 x 5/8"	1	Pass (6 cyl "H" Series)	47-48
		1	Comm,Trucks (6 cyl "H" Series)	47
	34941-S2 Lockwasher-5/16"			
	44722-S8 Washer-flat-5/16"			

+ No Longer Supplied



CHASSIS PARTS CATALOGUE

DISTRIBUTOR CHART

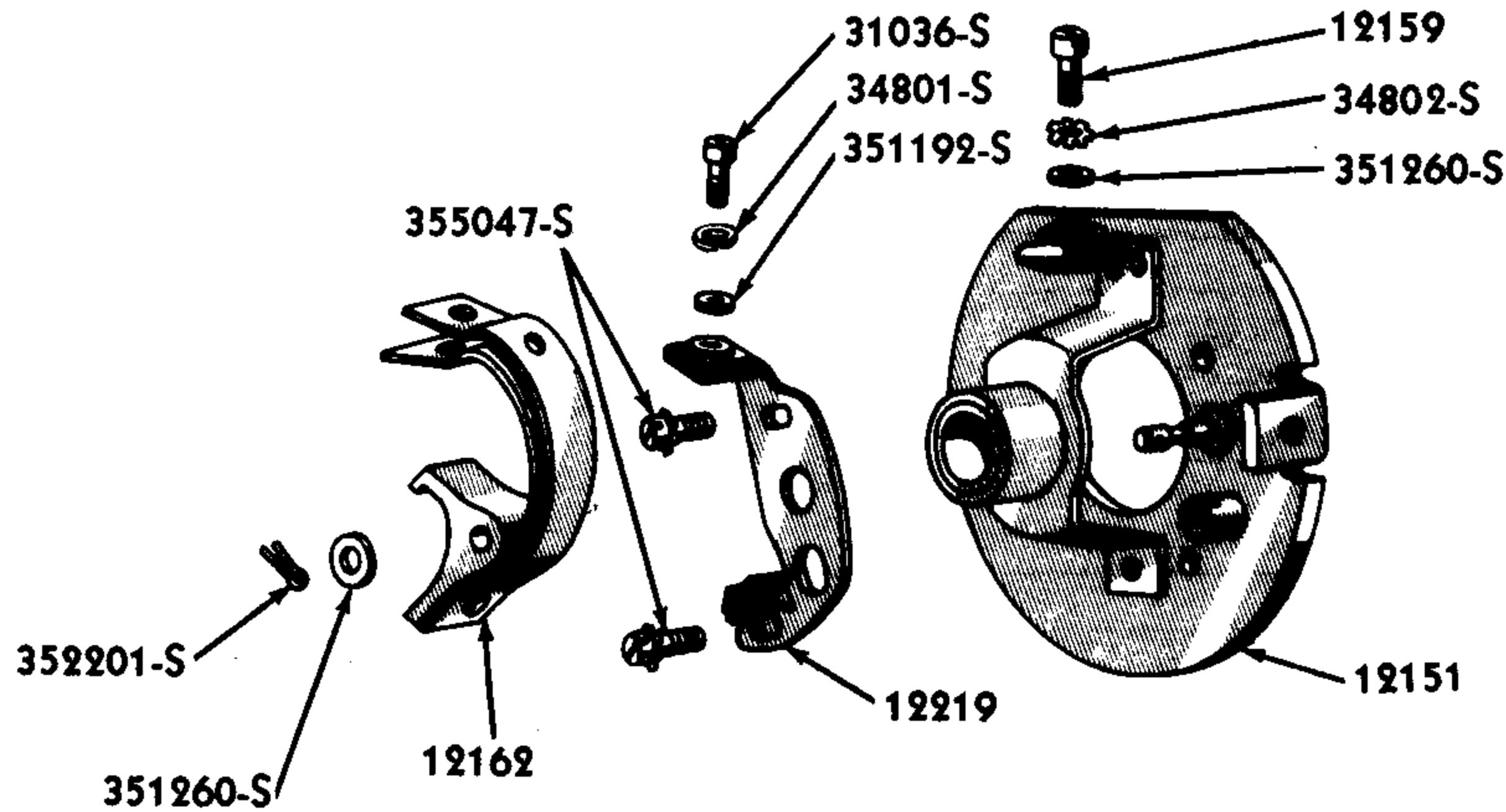
PART NUMBER	PART NAME	DISTRIBUTOR															
		A-12127	B-12127	9N-12100	1GA-12127	6GA-12127	7HA-12127	18-12127	40-12127-A	40-12127-B	68-12127	78-12127	11A-12127	21A-12127	89A-12127		
†18-12120	Bushing (distributor housing)-front							1									
40-12120	Bushing (distributor housing)-front								1	1	1	1	1				
1GA-12120	Bushing (distributor breaker plate)				1	1									1	1	
7RA-12120	Bushing (distributor housing)-upper						1										
40-12124	Housing (distributor advance)							1	1	1							
68-12124	Housing (distributor advance)										1	1	1				
18-12126	Pipe (distributor drain)							1	1	1	1	1	1				
21A-12126-A	Pin (distributor terminal housing location)				1	1									1	1	
A 12130	Housing assy (distributor)	1															
	351259-S Washer (distributor housing insulation) .20" x .56"	1															
†B 12130	Housing assy (distributor)		1														
18 12130	Housing assy (distributor)-replaced by 40-12130							1									
40 12130	Housing assy (distributor)								1	1							
68 12130	Housing assy (distributor)-replaced by 78-12130										1						
78 12130	Housing assy (distributor)											1	1				
21A 12130-A	Housing assy (distributor)				1	1									1	1	
7HA 12130	Housing assy (distributor)						1										
B 12132	Bushing (distributor housing)	2	2														
18 12132	Bushing (distributor housing)			1	1	1		1	1	1	1	1	1	1	1	1	1
7RA 12132	Bushing (distributor housing)-lower						1										
18 12133	Wick (distributor oil)							1	1	1	1	1	1				
†18 12134	Gasket (distributor advance housing)							1									
1GA 12134	Seal (distributor housing vacuum)				1	1									1	1	
B 12135	Oiler (distributor housing)	1	1														
1GA 12135	Retainer (distributor housing vacuum seal)				1	1									1	1	
18 12136	Plug (distributor oil hole)-use with 18-12130-replaced by 74111-S							1									
	74111-S Plug (distributor oil hole)-5/8"							1									
A 12137	Spring (distributor breaker plate friction)	1															
9N 12137	Bail (ignition coil)-use with 9N-12024			1													
18 12138-A	Plug (distributor housing inspection hole)-rubber							2	2	2	2	2					
9N 12139	Housing & clamp assy (distributor)			1													
18 12140-A	Gasket (ignition coil to distributor)-use with 18-12024-A							1	1	1							

† No Longer Supplied



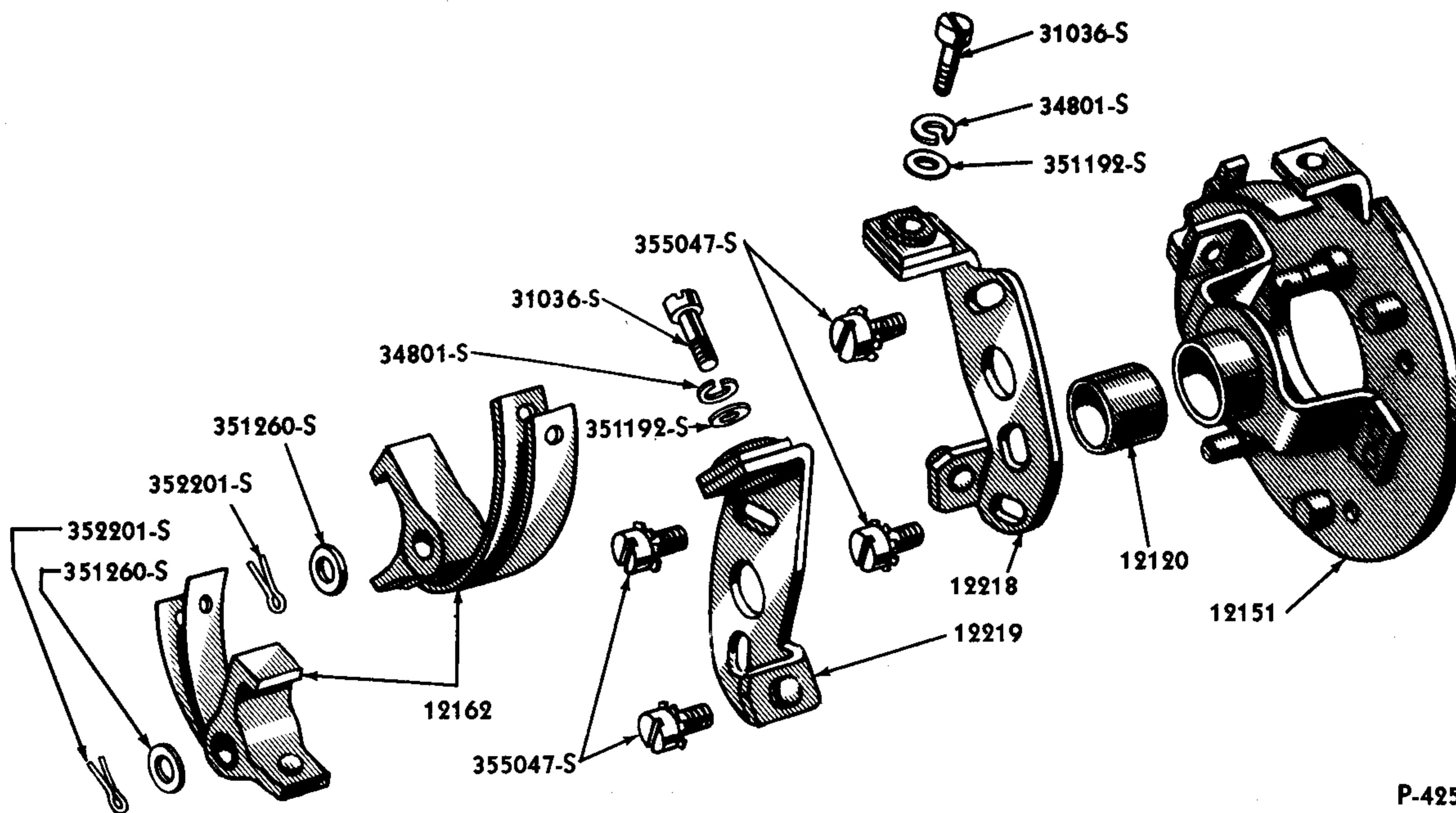


## CHASSIS PARTS CATALOGUE



P-551

### 1941-42 4 CYL. DISTRIBUTOR BREAKER (9N-12150)



P-425

### 1942-48 8 CYL. DISTRIBUTOR BREAKER (21A-12150)

Basic numbers only shown on illustration. Order by Part Numbers shown in list of parts.

### DISTRIBUTOR CHART

PART NUMBER	PART NAME	DISTRIBUTOR													
		A-12127	B-12127	9N-12100	1GA-12127	5GA-12127	7HA-12127	18-12127	40-12127-A	40-12127-B	68-12127	78-12127	11A-12127	21A-12127	59A-12127
18-12150-B	Breaker assy (distributor)							1	1	1					
68 12150	Breaker assy (distributor)									1	1	1			
9N 12150	Breaker assy (distributor)			1											
	350101-S7 Screw (distributor breaker plate)- No.10-32 x 1/2"			1											
	+63311-S7 Rivet (distributor breaker primary bracket)-5/32" x 5/16"			1											
	91A-12174 Washer (distributor breaker plate screw)- replaced by 59A-12182-A			1											
	34803-S7 Lockwasher (distributor breaker plate screw) -No.10			1											

† No Longer Supplied

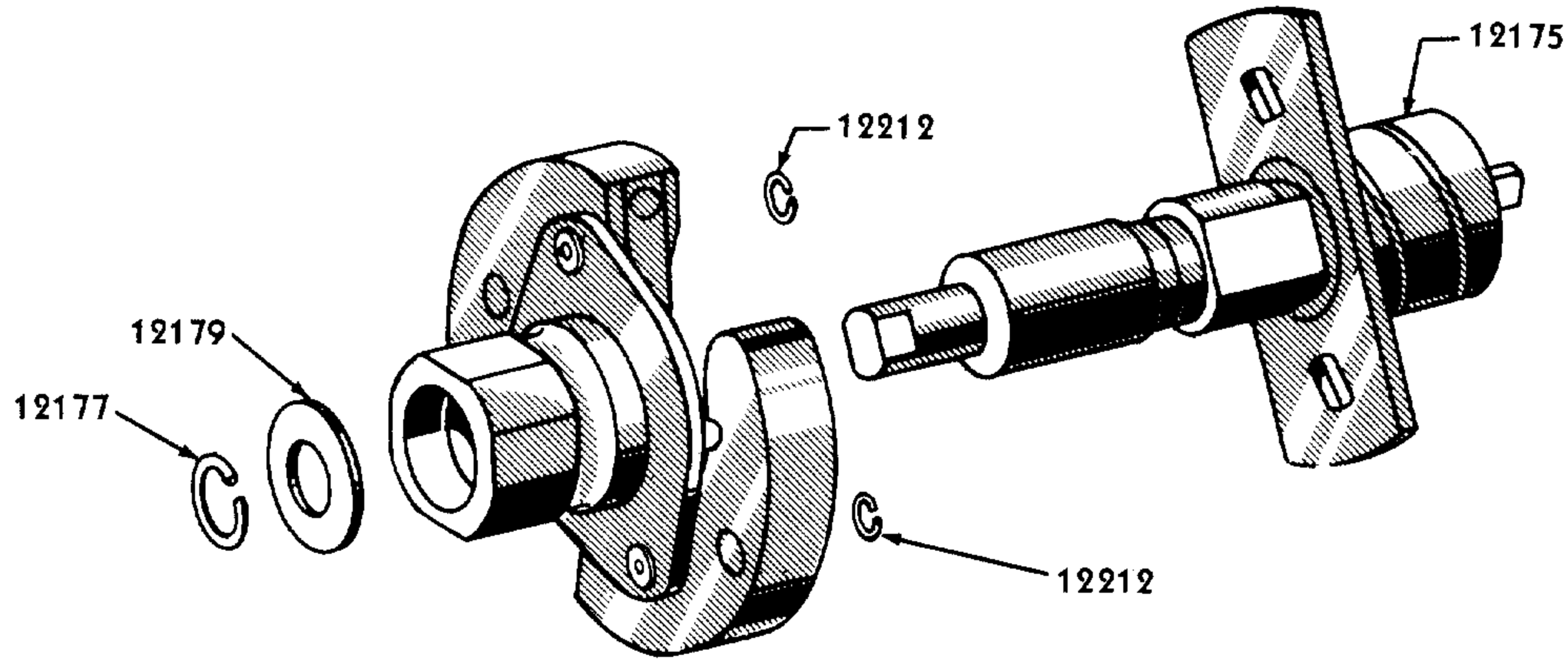




CHASSIS PARTS. CATALOGUE

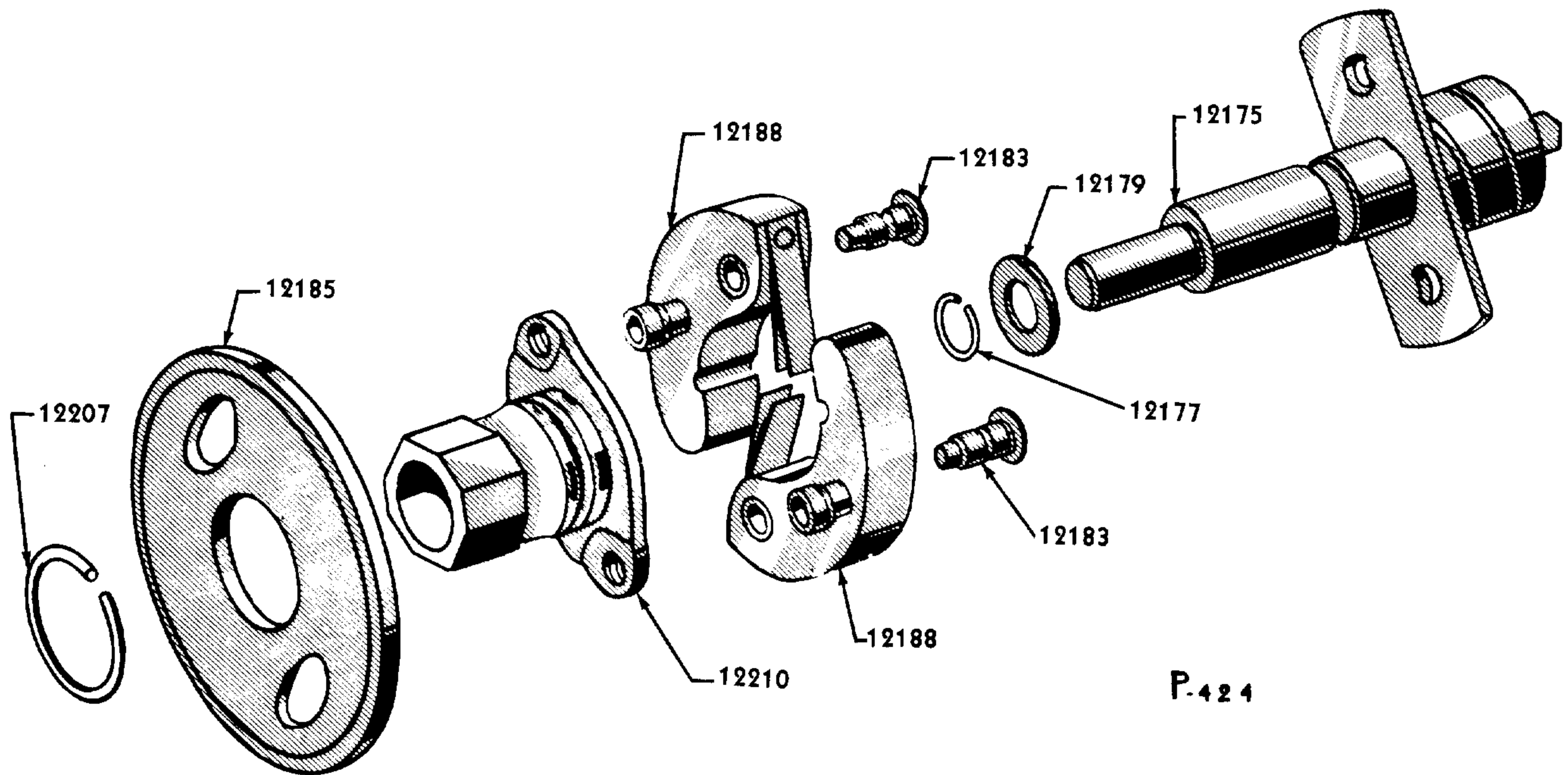
DISTRIBUTOR CHART

PART NUMBER	PART NAME	DISTRIBUTOR													
		A-12127	B-12127	9N-12100	1GA-12127	5GA-12127	7HA-12127	1B-12127	40-12127-A	40-12127-B	66-12127	78-12127	11A-12127	21A-12127	59A-12127
91A 12160	Ferrule (distributor primary)			1											
A 12162	Arm & point assy (distributor breaker)-repl. by A-12199	Refer to 12199													
B 12162	Arm & point assy (distributor breaker)-repl. by B-12199	Refer to 12199													
18 12162-B	Arm & point assy (distributor breaker)							1	1	1					
68 12162	Arm & point assy (distributor breaker)				1	1				2	2	2	2	2	
	31036-S8 Screw (distributor breaker arm to breaker conductor)-No.6-32 x 5/16"									2	2	2	2	2	
	34801-S7 Lockwasher (distributor breaker arm to breaker conductor screw)-No.6									2	2	2	2	2	
	351192-S Washer-flat (distributor breaker arm to breaker conductor screw)-9/64"									2	2	2	2	2	
	351176-S Washer-flat (distributor breaker arm points)-5/64"									2	2	2	2	2	
	351260-S Washer-flat (distributor breaker arm & points)-3/16"				1	1				2	2	2	2	2	
	351301-S Washer-flat (distributor breaker arm & points)-1/4"							2	2	2					
	352200-S Cotter pin (distributor breaker arm & points)-3/64" x 3/8"							2	2	2					
	352201-S Cotter pin (distributor breaker arm & points)-3/64" x 5/16"				1	1				2	2	2	2	2	
9N 12162	Arm & point assy (distributor breaker)			1											
	351260-S Washer-flat (distributor breaker arm & points)-3/16"			1											
	352201-S Cotter pin (distributor breaker arm & points)-3/64" x 5/16"			1											
18 12163-B	Point (distributor breaker)-use with 18-12162-B							2	2	2					
68 12163-A	Contact (distributor breaker arm)											2		2	
B 12169	Spring (distributor breaker arm)		1												
68 12169	Spring (distributor breaker arm)			1	1					2	2	2	2	2	
	351178-S Washer-flat (distributor breaker arm spring)-.10" x 3/16"			1	1					2	2	2	2	2	
B 12170	Shaft & cam assy (distributor)		1												
7HA 12171	Point set assy (distributor breaker arm & contact)							1							
	34801-S7 Lockwasher (distributor breaker arm to contact bracket)-No.6							1							
	351192-S Washer-flat (distributor breaker arm to contact bracket) -9/64"							1							
	34051-S7 Nut (distributor breaker arm stud)-No.6-32							1							
	31037-S7 Screw (distributor point set to housing attaching)-No.8-32 x 5/16"							1							
	68-12230 Screw (distributor point set to housing attaching)-replaced by 31037-S7							1							
B 12172	Point & screw assy (distributor contact)-repl. by AorB-12199	Refer to 12199													
18 12172-B	Point & screw assy (distributor contact)							2	2	2					
	40-12230 Screw (distributor point & screw locking)							2	2	2					
	34801-S7 Lockwasher (distributor contact point locking screw)-No.6							2	2	2					
68 12172-A	Point (distributor contact bracket)-use with 68-12218 or 68-12219			1	1	1				2	2	2	2	2	
21A 12173	Gasket (distributor breaker plate adjustment)			1	1								1	1	
18 12174	Washer (distributor breaker plate adjusting screw)	Refer to 12151													
91A 12174	Washer (distributor breaker plate adjusting screw)-replaced by 59A-12182-A	Refer to 12151													



P-541

1942-47 8 CYL. DISTRIBUTOR SHAFT, CAM & WEIGHTS (9N-12187)



P-424

1942-47 8 CYL. DISTRIBUTOR SHAFT, CAM & WEIGHTS (21A-12187)

Basic numbers only shown on illustration. Order by Part Numbers shown in list of parts.

DISTRIBUTOR CHART

PART NUMBER	PART NAME	DISTRIBUTOR													
		A-12127	B-12127	9N-12100	1GA-12127	5GA-12127	7HA-12127	18-12127	40-12127-A	40-12127-B	68-12127	78-12127	11A-12127	21A-12127	59A-12127
+40 12175-A	Shaft assy (distributor)-stamped "40A"								1						
+40 12175-B	Shaft assy (distributor)-stamped "40B"							1		1					
68 12175	Shaft assy (distributor)-stamped "68"-replaced by 11A-12175										1	1			
9N 12175	Shaft assy (distributor)			1											
11A 12175	Shaft assy (distributor)-stamped "11A"												1		
1GA 12175	Shaft assy (distributor)				1	1									
21A 12175	Shaft assy (distributor)													1	1
7HA 12175-A	Shaft & cam assy (distributor)						1								
+40 12176-A	Cam & weights assy (distributor)								1						
+40 12176-B	Cam & weights assy (distributor)							1		1					

+ No Longer Supplied





## CHASSIS PARTS CATALOGUE

## DISTRIBUTOR CHART

PART NUMBER	PART NAME	DISTRIBUTOR													
		A-12127	B-12127	9N-12100	1GA-12127	5GA-12127	7HA-12127	18-12127	40-12127-A	40-12127-B	60-12127	78-12127	11A-12127	21A-12127	59A-12127
48 12210	Cam assy (distributor)							1	1	1					
68 12210-A	Cam assy (distributor)										1	1	1	1	1
1GA 12210	Cam assy (distributor)				1	1									
	7HA-12175 Cam & shaft assy (distributor)	Refer to 7HA 12175													
B 12211	Screw (distributor cam)	1	1												
	351356-S Lockwasher (distributor cam screw)-5/16"	1	1												
	351242-S7 Washer(dist.cam screw thrust) -21/64"	1	1												
91A 12212	Retainer (distributor cam shaft weight)			1											
7RA 12213-B	Retainer (distributor rotor)						1								
21A 12214	Insulator (distributor primary bracket)				1	1							1	1	
2GA 12215	Conductor (distributor breaker)				1	1									
7HA 12216-B	Wire assy (distributor primary terminal)						1								
	350032-S Screw (distributor primary terminal)- No.10-32 x .84"						1								
	350860-S Nut (distributor primary terminal screw)- No.10-32						1								
	34051-S7 Nut (distributor primary terminal screw)-No.6-32						1								
	351256-S7 Washer-flat (distributor primary terminal screw)-.19" x 3/8"						1								
	34803-S7 Lockwasher (distributor primary terminal screw)-No.10						1								
68 12218	Point & bracket assy (distributor contact)-RH										1	1	1	1	1
68 12219	Point & bracket assy (distributor contact)-LH			1	1	1					1	1	1	1	1
	355047-S7 Screw & washer assy (distributor contact point & bracket)-No.8-32 x 1 3/4"			2	2	2					4	4	4	4	4
	355047-S7 Screw & washer assy (distributor contact point & bracket)-No.8-32 x 1 3/4"			2	2	2					2	2	2		
	31036-S8 Screw (distributor contact point & bracket to breaker plate)-No.6- 32 x 5/16"			1	1	1					2	2	2	2	2
	34801-S7 Lockwasher (distributor contact point & bkt.to breaker plate screw)-No.6			1	1	1					2	2	2	2	2
	351192-S Washer-flat (distributor contact point & bracket to breaker plate screw)- 9/64"-brass			1	1	1					2	2	2	2	2
18 12220	Plunger assy (distributor vacuum brake)				1	1		1	1	1	1	1	1	1	1
18 12222	Shoe (distributor vacuum brake)				1	1		1	1	1	1	1	1	1	1
18 12223	Nut (distributor vacuum brake adjusting)							1							
18 12224	Nut (dist vacuum brake adjusting lock)							1							
18 12225-B	Spring (distributor vacuum brake)				1	1			1	1	1	1	1	1	1
7HA 12225	Spring (distributor diaphragm)-located nearest to points						1								
18 12226	Tube (distributor vacuum)							1							
40 12226-B	Tube (distributor vacuum)								1	1					
52 12226	Tube (distributor vacuum)-60 HP only											1			
11A 12226-B	Tube (distributor vacuum)-90 & 100 HP-21 1/2" long											1	1	1	
1GA 12226-B	Tube (distributor vacuum)-24" long				1	1									
21A 12226	Tube (distributor vacuum)-20 7/8" long													1	1
59A 12226	Tube (distributor vacuum)-3/16"-25 1/8" developed length- use with 59A-9518-replaced by 8C-2269-B														1
7HA 12226	Tube (distributor vacuum)-3/16"-44.31" developed length- replaced by 8C-2269-B							1							
	+91A-2244-A Clip (dist. vacuum tube to cylinder head)							1							
	24308-S7 Bolt (distributor vacuum tube clip to cylinder head)-1/4"-20 x 1/2"							1							
	34805-S8 Lockwasher (distributor vacuum tube clip to cylinder head bolt)-1/4"							1							
	351112-S Nut (distributor vacuum tube)-3/8"-24				2	2	2	2	2	2	2	2	2	2	2

† No Longer Supplied



CHASSIS PARTS CATALOGUE

DISTRIBUTOR CHART

PART NUMBER	PART NAME	DISTRIBUTOR													
		A-12127	B-12127	9N-12100	1GA-12127	8GA-12127	7HA-12127	1B-12127	40-12127-A	40-12127-B	68-12127	78-12127	11A-12127	21A-12127	89A-12127
40 12227	Adjustment assy (distributor vacuum brake)				1	1		1	1	1	1	1	1	1	
	33923-S7 Nut (distributor vacuum brake adjustment lock)-5/16"-24				1	1		1	1	1	1	1	1	1	
40 12228	Nut (distributor vacuum brake adjusting)				1	1		1	1	1	1	1	1	1	
†40 12230	Screw (distributor contact point & screw locking)	Refer to 1B-12172-B													
68 12230	Screw (dist. point set to housing attaching)-replaced by 31037-S7 #8-32 x 5/16"	Refer to 7RA-12171													
63 12230	Screw (dist. contact point & bracket lock)-replaced by 31037-S7 #8-32 x 5/16"						1				2	2	2		
68 12230	Screw (distributor breaker ground wire to breaker arm)-replaced by 31037-S7 #8-32 x 5/16"						1								
	34802-S7 Lockwasher-No.8						1			2	2	2			
1GA 12230	Screw (distributor contact point & bracket lock)-No.8 - replaced by 355047-S7				2									4	
	34802-S7 Lockwasher-No.8				2									4	
68 12231	Screw (distributor contact point & bracket lock)-No.8 x 5/8"									2	2	2			
	34802-S7 Lockwasher-No.8									2	2	2			
1GA 12232	Terminal (distributor primary)				1	1								1	1
	350830-S Nut (distributor primary terminal)-No.8-32				1	1								1	1
	34052-S7 Nut (distributor primary terminal)-No.8-32					1									1
7RA 12233	Bushing (dist. primary terminal screw insulating)-outer						1								
7RA 12234	Washer (distributor primary terminal screw insulating)-inner						1								
†18 12238	Rivet (distributor contact point & bracket)-1/8" x 9/32" tubular								4	4					
21A 12244	Insulator (distributor primary bracket)				1	1								1	1
B 12249	Shaft (distributor coupling)	1	1												
1GA 12249	Cap (distributor primary terminal)				1	1								1	1
	21A 12257 Bracket (ignition coil mounting)	Refer to 1GA-12024													
	7RA-12264 Wire assy (distributor breaker ground)						1								
	355047-S7 Screw (dist breaker ground wire to housing) -#8-32 x 1 3/4"						1								
	7HA-12271-A Retainer (ignition wires)-at terminal housing						1								
	7HA-12273 Arm assy (distributor timing)-includes nut & bolt						1								
	31144-S7 Bolt (distributor timing arm clamping)-1/4"-20 x 1 1/4"						1								
	34095-S8 Nut (distributor timing arm clamping bolt)-1/4"-20						1								
	34805-S8 Lockwasher (distributor timing arm clamping bolt)-1/4"						1								
	24386-S8 Bolt (distributor timing arm set)-5/16"-18 x 1"						1								
	34941-S7 Lockwasher (distributor timing arm set bolt)-5/16"						1								
	44722-S8 Washer-flat (distributor timing arm set bolt)-5/16"						1								
	7RA-12370-B Diaphragm assy (distributor vacuum control)						1								
	43243-S8 Screw assy (distributor diaphragm to housing)-#8-32 x 3/4"						2								
	7RA-12388 Retainer (distributor vacuum control diaphragm rod)						1								
	7FA 6652 Gear (distributor driven)-iron						1								
	72432-S Pin (distributor driven gear to oil pump shaft)-1/8" x 13/16"						1								

† No Longer Supplied





## CHASSIS PARTS CATALOGUE

PART NUMBER	PART NAME	NO. REQ'D	MODEL	YEAR 19__
18 12250	Resistor assy (ignition)	1	Pass,Comm,Trucks	32-48
		1	COE	32-47
01A 12250-A	Breaker assy (light wiring circuit)-with ignition resistor-replaced by 01A-12250-B	1	Pass,Comm,Trucks	33-40
		1	Sedan Delivery	33-41
01A 12250-B	Breaker assy (light wiring circuit)-with ignition resistor	1	Pass,Comm,Trucks	33-40
		1	Sedan Delivery	33-41
01A 12250-C	Breaker assy (light wiring circuit)-with ignition resistor	1	Pass,Comm,Trucks	33-40
		1	Sedan Delivery	33-41
11A 12250-A	Breaker assy (light wiring circuit)-with ignition resistor-replaced by 11A-12250-C	1	Pass,Comm,Trucks	41-46
		1	Sedan Delivery	42-46
11A 12250-B	Breaker assy (light wiring circuit)-with ignition resistor	1	Std. Pass	41-42
11A 12250-C	Breaker assy (light wiring circuit)-with ignition resistor	1	Pass,Comm,Trucks	41-46
		1	Sedan Delivery	42-46
		1	COE	41-47
11A 12250-D	Breaker assy (light wiring circuit)-with ignition resistor	1	Pass,Comm,Trucks	41-46
		1	Sedan Delivery	42-46
		1	COE	41-47
11TS 12250	Breaker assy (light wiring circuit)-with ignition resistor-for 12 volt system	1	Trucks (except COE & 122")	46-47
51A 12250-A	Breaker assy (top operating mechanism wiring circuit)-30 amp	1	Conv. Coupe & Sportsman coupe	46-48
	24742-S2 Screw (resistor & circuit breaker to dash)-No.8-32 x 1 3/4"	2	Pass,Comm,Trucks	32-37
	37611-S7 Screw (circuit breaker to instrument panel)-No.8-32 x 1/4"	1	Pass	38-48
		1	Comm,Trucks	38-47
	24726-S7 Screw (resistor & circuit breaker to dash)-No.8-32 x 1 1/2"	2	Pass	37-48
		2	Comm,Trucks	37-47
	24662-S Screw (resistor & circuit breaker to dash)-No.8-32 x 3/4"	2	COE	39
	34052-S7 Nut-No.8-32			
	34802-S7 Lockwasher-No.8			
	350830-S Nut (ignition coil wire to resistor)-No.8-32	1		
99W 12253	Insulator (ignition resistor & circuit breaker)	1	COE	40
01W 12253	Insulator (ignition resistor & circuit breaker)	1	COE	40-41
11W 12253	Insulator (ignition resistor & circuit breaker)	1	COE	41-46
21A 12257	Bracket (ignition coil to cylinder head mounting)		Refer to 1GA-12024	
51A 12258-A	Breaker assy (light wiring circuit)-consists of one 15 amp & one 30 amp circuit breaker	1	Pass	46-48
		1	Comm,Trucks (except COE)	46-47
	37611-S7 Screw (circuit breaker attaching)-No.8-32 x 1/4"	2		
	34079-S7 Nut (circuit breaker terminal)-No.10-32	4		
	34803-S7 Lockwasher-No.10			
18 12259-A	Wire set (spark plug)-consists of the following 2- 18 12113 Seal      2- 18 12284 Wire 2- 18 12283 Wire      2- 18 12286 Wire 2- 18 12287 Wire	1	Pass,Comm,Trucks (8 cyl) 90 HP	32-36
18 12259-B	Wire set (spark plug)-consists of the following 1-Wire assy 21.75" to 22.25" long 1-Wire assy 25.75" to 26.25" long 2-Wire assy 27.75" to 28.25" long 1-Wire assy 32.25" to 32.75" long 3-Wire assy 36.50" to 37.00" long	1	Pass 90 & 100 HP (8 cyl) Comm,Trucks 90 & 100 HP (8 cyl)	32-48 32-47



CHASSIS PARTS CATALOGUE

PART NUMBER	PART NAME	NO. REQ'D	MODEL	YEAR
74 12259	Wire set (spark plug)-consists of the following 2- 18 12113 Seal                      2- 74 12283 Wire 2- 74 12284 Wire                      2- 74 12286 Wire 2- 74 12287 Wire	1	Pass,Comm,Trucks (8 cyl) 60 HP	37-40
78 12259	Wire set (spark plug)-replaced by 18-12259-B consists of the following 2- 18 12113 Seal                      2- 78 12283 Wire 2- 78 12284 Wire                      2- 78 12286 Wire 2- 78 12287 Wire	1	Pass,Comm,Trucks (8 cyl) 90 & 100 HP	37-41
1GA 12259-A	Wire set (spark plug)-consists of the following 6- 9N 12113-A Seal                      1-1GA 12282 Wire (No.5) 1-1GA 12283 Wire (No.2)                      1-1GA 12284 Wire (No.3) 1-1GA 12285 Wire (No.6)                      1-1GA 12286 Wire (No.1) 1-1GA 12287 Wire (No.4)                      1-1GA 12298 Wire (coil)	1	Pass,Comm,Trucks (6 cyl) 90 HP	41-42
1GA 12259-B	Wire set (spark plug)-consists of the following 1-Wire assy 20.50" to 21.00" long 1-Wire assy 22.50" to 23.00" long 1-Wire assy 28.50" to 29.00" long 1-Wire assy 31.00" to 31.50" long 1-Wire assy 37.50" to 38.00" long 1-Wire assy 40.00" to 40.50" long	1	Pass,Comm,Trucks (6 cyl) "G" Series	41-47
21A 12259	Wire set (spark plug)-consists of the following 8- 9N 12113-A Seal                      1-21A 12282 Wire (No.5) 1-21A 12283 Wire (No.2)                      1-21A 12284 Wire (No.3) 1-21A 12285 Wire (No.6)                      1-21A 12286 Wire (No.1) 1-21A 12287 Wire (No.4)                      1-21A 12295 Wire (No.7) 1-21A 12296 Wire (No.8)                      1-21A 12298 Wire (coil)	1	Pass,Comm,Trucks (8 cyl) 90 & 100 HP	42-44
59A 12259	Wire set (spark plug)-consists of the following  2-59A 12110 Conduit                      1-59A 12113 Insulator-RH 1-59A 12282 Wire (No.5)                      1-59A 12283 Wire (No.2) 1-59A 12284 Wire (No.3)                      1-59A 12285 Wire (No.6) 1-59A 12286 Wire (No.1)                      1-59A 12287 Wire (No.4) 1-59A 12295 Wire (No.7)                      1-59A 12296 Wire (No.8) 1-59A 12297 Insulator-LH                      1-59A 12298 Wire (coil) 1-9N 12113-A Seal	1 1	Pass (8 cyl) 90 & 100 HP Comm,Trucks (8 cyl) 90 & 100 HP	46-48 45-47
5GA 12259	Wire set (spark plug)-consists of 1-5GA 12113 Insulator                      1- 9N 12113-A Seal 1-5GA 12282 Wire (No.5)                      1-5GA 12283 Wire (No.2) 1-5GA 12284 Wire (No.3)                      1-5GA 12285 Wire (No.6) 1-5GA 12286 Wire (No.1)                      1-5GA 12287 Wire (No.4) 1-5GA 12298 Wire (coil)	1	Pass,Comm,Trucks (6 cyl) 90 HP "G" Series	46-47
7HA 12259	Wire set (spark plug)-consists of the following  1-7HA 12282-B Wire assy (dist. to spark plug)-No.5 1-7HA 12283-B Wire assy (dist. to spark plug)-No.2 1-7HA 12284-B Wire assy (dist. to spark plug)-No. 3 1-7HA 12285-B Wire assy (dist. to spark plug)-No.6 1-7HA 12286-B Wire assy (dist. to spark plug)-No.1 1-7HA 12287-B Wire assy (dist. to spark plug)-No.4 1-7HA 12298-B Wire assy (coil to dist. high tension) 6- 2N 12113 Seal (dist. to spark plug wire weather) 2- 2N 12113 Seal (dist. to coil high tension wire weather)	1 1	Pass (6 cyl)"H" Series) Comm,Trucks (6 cyl)"H" Series)	47-48 47
APA 12259-A	Wire set (spark plug)-consists of the following 10-18 12283 Wire assy Nos. 2 & 6 10-18 12286 Wire assy Nos. 3 & 7 10-18 12286 Wire assy Nos. 1 & 5 10-18 12287 Wire assy Nos. 4 & 8	1	Pass,Comm,Trucks (8 cyl)	32-36



## CHASSIS PARTS CATALOGUE

PART NUMBER	PART NAME	NO. REQ'D	MODEL	YEAR
				19
51T 12260	Resistor assy (ignition)-for 12 volt system	1	Trucks (except COE)	47
59A 12260	Resistor assy (ignition)	1	Pass	46-48
		1	Comm, Trucks (except COE)	46-47
	24662-S Screw (ignition resistor attaching)-No.8-32 x 3/4"	2		
	34052-S7 Nut (ignition resistor)-No.8-32	2		
	34802-S2 Lockwasher-No.8			
7RA 12264	Wire assy (distributor breaker ground)	1	Pass (6 cyl "H" Series)	47-48
		1	Comm, Trucks (6 cyl "H" Series) Refer to 12127 Distributor Chart	47
7BA 12271-A	Retainer (ignition wire)-at terminal housing	1	Pass (6 cyl "H" Series)	47-48
		1	Comm, Trucks (6 cyl "H" Series) Refer to 12127 Distributor Chart	47
7BA 12273	Arm assy (distributor timing)	1	Pass (6 cyl "H" Series)	47-48
		1	Comm, Trucks (6 cyl "H" Series) Refer to 12127 Distributor Chart	47
†B 12275	Connector (distributor to spark plug)	4	Pass, Comm, Trucks (4 cyl)	28-34
74 12280	Wiring & conduit assy (distributor to spark plug)-R.H.	1	Pass, Comm, Trucks 60 HP (8 cyl)	37-40
78 12280	Wiring & conduit assy (distributor to spark plug)-R.H.	1	Pass, Comm, Trucks 90 & 100 HP (8 cyl)	32-41
1GA 12280	Wiring & conduit assy (distributor to spark plug)-R.H.	1	Pass, Comm, Trucks 90 HP (6 cyl)	41-42
	24346-S7 Bolt (wiring conduit to cylinder head)-5/16"-18 x 3/4"	2	Pass, Comm, Trucks 90 HP (6 cyl)	41-47
21A 12280-B	Wiring & conduit assy (distributor to spark plug)-R.H.	1	Pass, Comm, Trucks 90 & 100 HP (8 cyl)	42-44
59A 12280	Wiring & conduit assy (distributor to spark plug)-R.H.	1	Pass (8 cyl)	46-48
		1	Comm, Trucks (8 cyl)	45-47
18 12281	Wiring & conduit assy (distributor to spark plug)-L.H.-also to instrument panel, light switch, starter switch, coil, ignition switch & generator	1	Pass, Comm, Trucks (8 cyl)	32
40 12281-A	Wiring & conduit assy (distributor to spark plug)-L.H.-also to instrument panel, light switch, starter switch, coil, ignition switch & generator-use with ammeter having screw type terminals	1	Pass, Comm, Trucks (8 cyl)	33
40 12281-B	Wiring & conduit assy (distributor to spark plug)-L.H.-also to instrument panel, light switch, starter switch, coil, ignition switch & generator-use with ammeter having snap terminals	1	Pass, Comm, Trucks (8 cyl)	33-34
68 12281	Wiring & conduit assy (distributor to spark plug)-L.H.-also to instrument panel, light switch, starter switch, coil, ignition switch & generator	1	Pass, Comm, Trucks (8 cyl)	35-36
74 12281	Wiring & conduit assy (distributor to spark plug)-L.H.-also to instrument panel, light switch, starter solenoid, coil, ignition switch & generator	1	Pass, Comm, Trucks 60 HP (8 cyl)	37
78 12281	Wiring & conduit assy (distributor to spark plug)-L.H.-also to instrument panel, light switch, starter solenoid, coil, ignition switch & generator	1	Pass, Comm, Trucks 90 HP (8 cyl)	37
81A 12281	Wiring & conduit assy (distributor to spark plug)-L.H.-also to fuse block, generator & coil	1	Pass, Comm, Trucks 90 HP (8 cyl)-except COE	38
81W 12281	Wiring & conduit assy (distributor to spark plug)-L.H.-also to fuse block generator & coil	1	COE	38
82A 12281	Wiring & conduit assy (distributor to spark plug)-L.H.-also to fuse block, generator & coil	1	Pass, Comm, Trucks 60 HP (8 cyl)	38

† No Longer Supplied



CHASSIS PARTS CATALOGUE

PART NUMBER	PART NAME	NO. REQ'D	MODEL	YEAR
				19__
91A 12281-A	Wiring & conduit assy (distributor to spark plug)- L.H.	1	Pass,Comm,Trucks 90 & 100 HP (8 cyl)	39-41
922A 12281	Wiring & conduit assy (distributor to spark plug)- L.H.	1	Pass,Comm,Trucks 60 HP (8 cyl)	39-40
1NC 12281	Wiring & conduit assy (distributor to spark plug)	1	Comm,Trucks 40 HP (4 cyl)	41-42
	40-6066 Stud (distributor to coil wiring conduit to cylinder head)		Refer to 6050 Group	
21A 12281	Wiring & conduit assy (distributor to spark plug)- L.H.	1	Pass,Comm,Trucks (8 cyl)	42-44
59A 12281	Wiring & conduit assy (distributor to spark plug)- L.H.	1	Pass (8 cyl)	45-48
		1	Comm,Trucks (8 cyl)	45-47
1GA 12282	Wire assy (spark plug)-No.5	1	Pass,Comm,Trucks (6 cyl)	41-42
21A 12282	Wire assy (spark plug)-No.5-28.00" long	1	Pass,Comm,Trucks 90 & 100 HP (8 cyl)	42-44
59A 12282	Wire assy (spark plug)-No.5	1	Pass (8 cyl)	45-48
		1	Comm,Trucks (8 cyl)	45-47
5GA 12282	Wire assy (spark plug)-No.5-36.50" long	1	Pass,Comm,Trucks (6 cyl"G" Series)	46-47
7HA 12282	Wire assy (spark plug)-No.5-20.00" long	1	Pass (6 cyl"H" Series)	47-48
		1	Trucks (6 cyl"H" Series)	47
18 12283	Wire assy (spark plug)-Nos. 2 & 6	2	Pass,Comm,Trucks (8 cyl)	32-36
74 12283	Wire assy (spark plug)-Nos. 2 & 6-22.75" long	2	Pass,Comm,Trucks 60 HP (8 cyl)	37-40
78 12283	Wire assy (spark plug)-Nos. 2 & 6	2	Pass,Comm,Trucks 90 & 100 HP (8 cyl)	37-41
†9N 12283	Wire assy (spark plug)-No.3	1	Comm,Trucks 40 HP (4 cyl)	41-42
1GA 12283	Wire assy (spark plug)-No.2	1	Pass,Comm,Trucks (6 cyl)	41-42
21A 12283	Wire assy (spark plug)-No.2-25.50" long	1	Pass,Comm,Trucks 90 & 100 HP (8 cyl)	42-44
59A 12283	Wire assy (spark plug)-No.2-26.00" long	1	Pass (8 cyl)	46-48
		1	Comm,Trucks (8 cyl)	45-47
5GA 12283	Wire assy (spark plug)-No.2-23.25" long	1	Pass,Comm,Trucks (6 cyl"G" Series)	46-47
7HA 12283	Wire assy (spark plug)-No.2-21.00" long	1	Pass (6 cyl"H" Series)	47-48
		1	Trucks (6 cyl"H" Series)	47
18 12284	Wire assy (spark plug)-Nos. 3 & 7	2	Pass,Comm,Trucks (8 cyl)	32-36
74 12284	Wire assy (spark plug)-Nos. 3 & 7-27.75" long	2	Pass,Comm,Trucks 60 HP (8 cyl)	37-40
78 12284	Wire assy (spark plug)-Nos. 3 & 7-30.50" long	2	Pass,Comm,Trucks 90 & 100 HP (8 cyl)	37-41
†9N 12284	Wire assy (spark plug)-No.2	1	Comm,Trucks	41-42
1GA 12284	Wire assy (spark plug)-No.3	1	Pass,Comm,Trucks (6 cyl)	41-42
21A 12284	Wire assy (spark plug)-No.3-37.00" long	1	Pass,Comm,Trucks 90 & 100 HP (8 cyl)	42-44
59A 12284	Wire assy (spark plug)-No.3-34.00" long	1	Pass (8 cyl)	46-48
		1	Comm,Trucks (8 cyl)	45-47
5GA 12284	Wire assy (spark plug)-No.3-28.75" long	1	Pass,Comm,Trucks (6 cyl"G" Series)	46-47
7HA 12284	Wire assy (spark plug)-No.3-18.50" long	1	Pass (6 cyl"H" Series)	47-48
		1	Trucks (6 cyl"H" Series)	47
1GA 12285	Wire assy (spark plug)-No.6	1	Pass,Comm,Trucks (6 cyl)	41-42
21A 12285	Wire assy (spark plug)-No.6-27.00" long	1	Pass,Comm,Trucks 90 & 100 HP (8 cyl)	42-44
59A 12285	Wire assy (spark plug)-No.6-27.50" long	1	Pass (8 cyl)	45-48
		1	Comm,Trucks (8 cyl)	45-47
5GA 12285	Wire assy (spark plug)-No.6-39.75" long	1	Pass,Comm,Trucks (6 cyl"G" Series)	46-47
7HA 12285	Wire assy (spark plug)-No.6-25.75" long	1	Pass (6 cyl"H" Series)	47-48
		1	Trucks (6 cyl"H" Series)	47
18 12286	Wire assy (spark plug)-Nos. 1 & 5	2	Pass,Comm,Trucks (8 cyl)	32-36
74 12286	Wire assy (spark plug)-Nos. 1 & 5-21.00" long	2	Pass,Comm,Trucks 60 HP (8 cyl)	37-40
78 12286	Wire assy (spark plug)-Nos. 1 & 5-22.50" long	2	Pass,Comm,Trucks 90 & 100 HP (8 cyl)	37-41
†9N 12286	Wire assy (spark plug)-No.4	1	Comm,Trucks 40 HP (4 cyl)	41-42
1GA 12286	Wire assy (spark plug)-No.1	1	Pass,Comm,Trucks (6 cyl)	41-42
21A 12286	Wire assy (spark plug)-No.1-21.50" long	1	Pass,Comm,Trucks 90 & 100 HP (8 cyl)	42-44
59A 12286	Wire assy (spark plug)-No.1-22.00" long	1	Pass (8 cyl)	46-48
		1	Comm,Trucks (8 cyl)	45-47
5GA 12286	Wire assy (spark plug)-No.1-18.50" long	1	Pass,Comm,Trucks (6 cyl"G" Series)	46-47
7HA 12286	Wire assy (spark plug)-No.1-22.00" long	1	Pass (6 cyl"H" Series)	47-48
		1	Trucks (6 cyl"H" Series)	47

† No Longer Supplied



## CHASSIS PARTS CATALOGUE

PART NUMBER	PART NAME	NO. REQ'D	MODEL	YEAR
				19__
18 12287	Wire assy (spark plug)-Nos. 4 & 8	2	Pass,Comm,Trucks (8 cyl)	32-36
74 12287	Wire assy (spark plug)-Nos: 4 & 8-30.50" long	2	Pass,Comm,Trucks 60 HP (8 cyl)	37-40
78 12287	Wire assy (spark plug)-Nos. 4 & 8-35.50" long	2	Pass,Comm,Trucks 90 & 100 HP (8 cyl)	37-41
+9N 12287	Wire assy (spark plug)-No.1	1	Comm,Trucks 40 HP (4 cyl)	41-42
1GA 12287	Wire assy (spark plug)-No.4	1	Pass,Comm,Trucks (6 cyl"G" Series)	41-42
21A 12287	Wire assy (spark plug)-No.4-36.50" long	1	Pass,Comm,Trucks 90 & 100 HP (8 cyl)	42-44
59A 12287	Wire assy (spark plug)-No.4-36.75" long	1	Pass (8 cyl)	46-48
		1	Comm,Trucks (8 cyl)	45-47
5GA 12287	Wire assy (spark plug)-No.4-31.00" long	1	Pass,Comm,Trucks (6 cyl"G" Series)	46-47
7HA 12287	Wire assy (spark plug)-No.4-17.75" long	1	Pass (6 cyl"H" Series)	47-48
		1	Trucks (6 cyl"H" Series)	47
21A 12288	Clip (cross over conduit)	2	Pass,Comm,Trucks 90 & 100 HP (8 cyl)	42-44
5GA 12290	Wiring, conduit & terminal housing assy (distributor to spark plug)	1	Pass,Comm,Trucks (6 cyl"G" Series)	46-47
+51T 12292	Spacer (ignition resistor to coil)-for 12 volt system	1	Trucks (except COE)	47
21A 12295	Wire assy (spark plug)-No.7-30.00" long	1	Pass,Comm,Trucks 90 & 100 HP (8 cyl)	42-44
59A 12295	Wire assy (spark plug)-No.7-32.50" long	1	Pass (8 cyl)	46-48
		1	Comm,Trucks (8 cyl)	45-47
21A 12296	Wire assy (spark plug)-No.8-36.50" long	1	Pass,Comm,Trucks 90 & 100 HP (8 cyl)	42-44
59A 12296	Wire assy (spark plug)-No.8-36.75" long	1	Pass (8 cyl)	46-48
		1	Comm,Trucks (8 cyl)	45-47
59A 12297	Seal (distributor to spark plug wire conduit weather)-L.H.	1	Pass (8 cyl)	46-48
		1	Comm,Trucks (8 cyl)	45-47
7HA 12297	Grommet (ignition cable)-thru ignition coil mounting strap	2	Pass (6 cyl"H" Series)	47-48
		2	Trucks (6 cyl"H" Series)	47
1GA 12298	Wiring assy (ignition coil to distributor high tension)-14" long	1	Pass,Comm,Trucks (6 cyl)	41
21A 12298	Wiring assy (ignition coil to distributor high tension)-11" long	1	Pass,Comm,Trucks 90 & 100 HP (8 cyl)	42-44
2GA 12298	Wiring assy (ignition coil to distributor high tension)-13" long	1	Pass,Comm,Trucks (6 cyl)	42
59A 12298	Wiring assy (ignition coil to distributor high tension)-14.5" long	1	Pass (8 cyl)	46-48
		1	Comm,Trucks (8 cyl)	45-47
5GA 12298	Wiring assy (ignition coil to distributor high tension)-16.50" long	1	Pass,Comm,Trucks (6 cyl"G" Series)	46-47
7HA 12298-B	Wiring assy (ignition coil to distributor high tension)-13.00" long	1	Pass (6 cyl"H" Series)	47-48
		1	Trucks (6 cyl"H" Series)	47
2GA 12299	Shield (distributor to spark plug wiring & conduit)	1	Pass,Comm,Trucks (6 cyl"G" Series)	42-47
A 12300	Condenser assy (distributor)-use with A-12127	1	Pass,Comm,Trucks	28-31
	26457-S7 Screw (condenser ground connection)-No.8-32 x 1/4"	1	Pass,Comm,Trucks	28-31
	+27053-S5 Screw (condenser to distributor body)-No.10-32 x 3/16"	1	Pass,Comm,Trucks	28-31
	34802-S7 Lockwasher (condenser ground connection)-No.8	1	Pass,Comm,Trucks	28-31
B 12300	Condenser assy (distributor)-use with B-12127	1	Pass,Comm,Trucks (4 cyl)	32-34
	37611-S7 Screw (condenser to distributor)-No.8-32 x 1/4"	1	Pass,Comm,Trucks (4 cyl)	32-34
	34802-S7 Lockwasher-No.8			
	31596-S7 Screw (condenser wire to distributor housing)- No.10-32 x 3/8"	1	Pass,Comm,Trucks (4 cyl)	32-34
	34803-S7 Lockwasher-No.10			
18 12300-B	Condenser assy (ignition coil)-use with 18-12024-A	1	Pass,Comm,Trucks (8 cyl)	32-36
68 12300	Condenser assy (ignition coil)-use with 68-12024	1	Pass,Comm,Trucks (8 cyl)	36
78 12300	Condenser assy (ignition coil)-use with 78-12036	1	Pass,Comm,Trucks (8 cyl)	37-41

† No Longer Supplied



CHASSIS PARTS CATALOGUE

PART NUMBER	PART NAME	NO. REQ'D	MODEL	YEAR
				19__
81A 12300	Condenser assy (ignition coil)-use with 81A-12036	1	Pass,Comm,Trucks (8 cyl)	37-41
	31628-S7 Screw (condenser to coil attaching)-No.10-32 x 5/8"	1	Pass,Comm,Trucks (8 cyl)	32-36
	355150-S7 Screw (condenser to coil attaching)-No.10-32 x 19/64"	1	Pass,Comm,Trucks (8 cyl)	37-41
	34803-S7 Lockwasher-No.10			
91A 12300	Condenser assy (distributor)-use with 9N-12100	1	Comm,Trucks 40 HP (4 cyl)	41-42
	37611-S7 Screw (condenser to distributor attaching)-No.8-32 x 1/4"	1	Comm,Trucks (4 cyl)	41-42
	34802-S7 Lockwasher-No.8			
1GA 12300-B	Condenser assy (distributor)-use with 1GA or 5GA-12127	1	Pass,Comm,Trucks (6 cyl "G" Series)	41-47
1GA 12300-B	Condenser assy (distributor)-use with 21A or 59A-12127	1	Pass (8 cyl)	42-48
		1	Comm,Trucks (8 cyl)	42-47
	31037-S7 Screw (condenser to distributor attaching)-No.8-32 x 5/16"	1	Pass (8 cyl)	42-47
		1	Comm,Trucks (8 cyl)	42-47
7RA 12300-B	Condenser assy (distributor)-use with 7HA-12127	1	Pass (6 cyl "H" Series)	47-48
		1	Trucks (6 cyl "H" Series)	47
	355047-S7 Screw (condenser to distributor breaker plate)-No.8-32 x 1 3/4"	1	Pass (6 cyl "H" Series)	47-48
		1	Trucks (6 cyl "H" Series)	47
1GA 12312	Cap (distributor condenser)	1	Pass,Comm,Trucks (6 cyl "G" Series)	41-47
		1	Pass (8 cyl)	42-48
		1	Comm,Trucks (8 cyl)	42-47
7RA 12370-B	Diaphragm assy (distributor vacuum control)	1	Pass (6 cyl "H" Series)	47-48
		1	Comm,Trucks (6 cyl "H" Series)	47
			Refer to 12127 Distributor Chart	
7RA 12388	Retainer (distributor vacuum control diaphragm rod)	1	Pass (6 cyl "H" Series)	47-48
		1	Comm,Trucks (6 cyl "H" Series)	47
			Refer to 12127 Distributor Chart	
18 12405-B	Spark plug-7/8" -C4	4	Pass,Comm,Trucks (4 cyl)	28-34
		8	Pass,Comm,Trucks (8 cyl)	32
40 12405-A	Spark plug-18mm-C7	8	Pass,Comm,Trucks (8 cyl)	33
40 12405-C	Spark plug-18mm-No.7	8	Pass,Comm,Trucks (8 cyl)	34-37
48 12405-A	Spark plug-18mm-No.6	8	Trucks (8 cyl)	35-36
01T 12405	Spark plug-14mm-H <sup>9</sup> comm. .025"/.028" gap setting	8	Comm,Trucks 60 HP (8 cyl)	37-40
		8	Comm,Trucks 90 & 100 HP (8 cyl)	38-47
		6	Comm,Trucks (6 cyl)	41-47
		4	Comm,Trucks (4 cyl)	41-42
7RA 12405	Spark plug-14mm-H10-change gap setting from .029"/.032" to .025"/.028"	8	Pass 60 HP (8 cyl)	37-40
		8	Pass 90 & 100 HP (8 cyl)	38-48
		6	Pass (6 cyl "G" Series)	41-47
7RA 12405	Spark plug-14mm-H10-gap setting .029"/.032"	6	Pass (6 cyl "H" Series)	47-48
†78 12409	Nut (spark plug terminal)	4	Pass,Comm,Trucks (4 cyl)	28-34
		8	Pass,Comm,Trucks (8 cyl)	28-48
		6	Pass,Comm,Trucks (6 cyl)	41-48
		4	Comm,Trucks (4 cyl)	41-42
B 12410	Gasket (oil pan drain plug)-7/8"	1	Pass,Comm,Trucks (8 cyl)	32
			Refer to 18-6730	
B 12410	Gasket (dual high front housing filler & drain plug)-7/8"	2	Trucks	28-29
			Refer to 483 Dual High Group	
B 12410	Gasket (spark plug)-7/8" diam. use with 18-12405-B	4	Pass,Comm,Trucks (4 cyl)	28-34
		8	Pass,Comm,Trucks (8 cyl)	32
40 12410	Gasket (spark plug)-use with 18mm spark plug	8	Pass,Comm,Trucks (8 cyl)	33-36
01A 12410-A	Gasket (spark plug)-use with 14mm spark plug	4	Comm,Trucks (4 cyl)	41-42
		6	Pass (6 cyl)	41-48
		6	Comm,Trucks (6 cyl)	41-47
		8	Pass (8 cyl)	37-48
		8	Comm,Trucks (8 cyl)	37-47

† No Longer Supplied